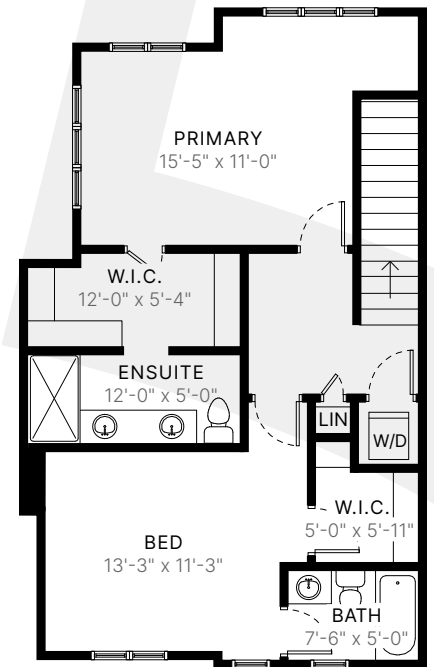
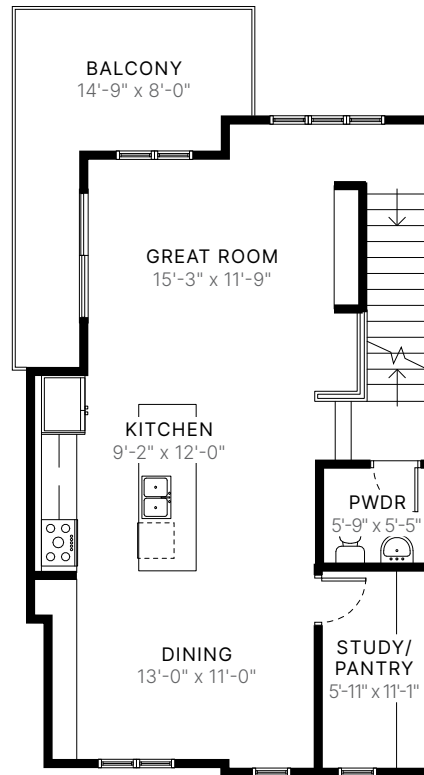
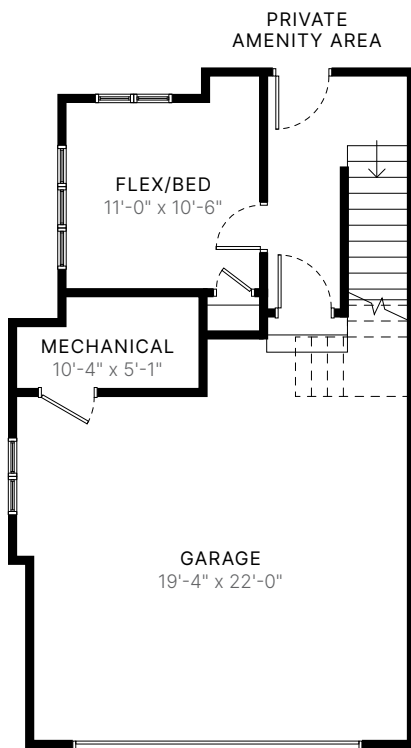


HADLEY

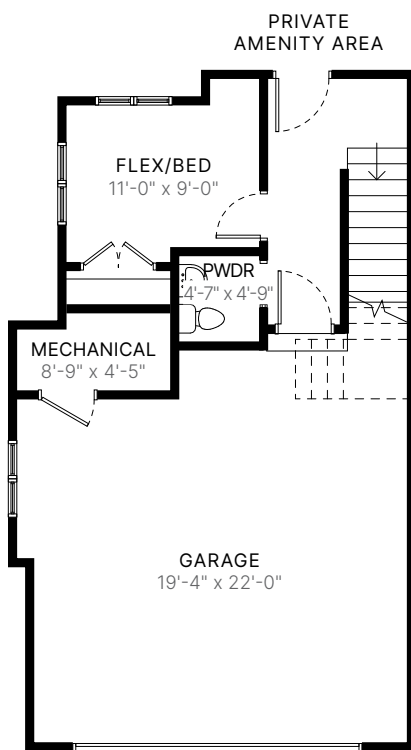
22' // 1,784 sq ft. // 3 bed // 2.5 bath



HADLEY

22' // 1,784 sq ft. // 3 bed // 2.5 bath

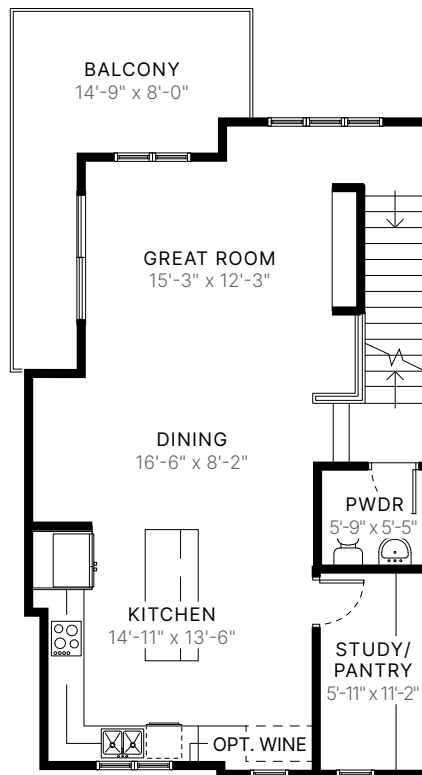
PRE-PLANNED OPTION



LOWER FLOOR

288 sq ft.

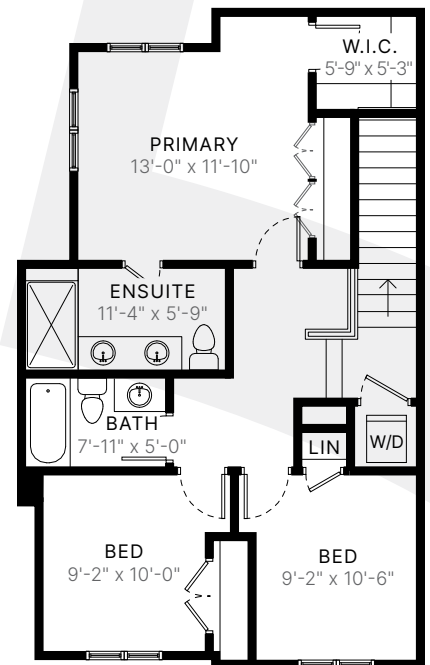
Half Bath Option



MAIN FLOOR

787 sq ft.

Rear Kitchen Option



UPPER FLOOR

787 sq ft.

3 Bedroom Option

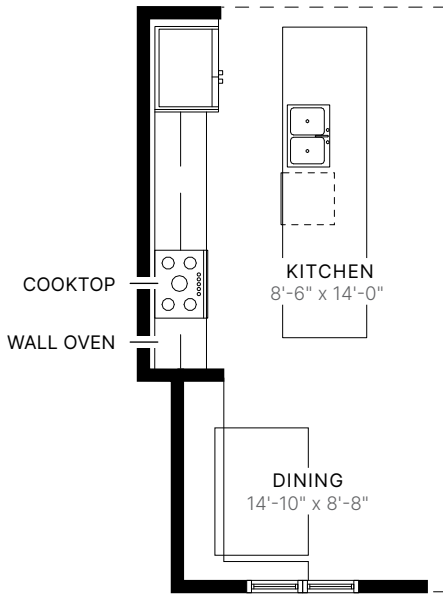
FIFTH
HOMES

The builder reserves the right to modify or change plans, specifications, features and prices without notice. Materials may be substituted with equivalent or better at the builder's sole discretion. All dimensions and sizes are approximate and are based on architectural measurements. As reverse, mirrored and/or flipped plans occur throughout the building, please see architectural plans if material to your decision to purchase. Renderings, furnishings and equipment shown are an artist's conception and are intended as a general reference only. Please see disclosure statement for specific offering details. E. & O.E.

HADLEY

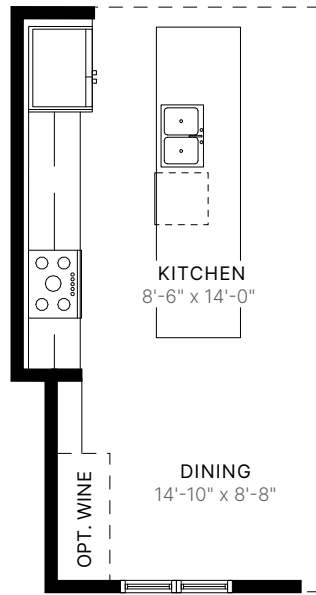
22' // 1,784 sq ft. // 3 bed // 2.5 bath

PRE-PLANNED OPTION



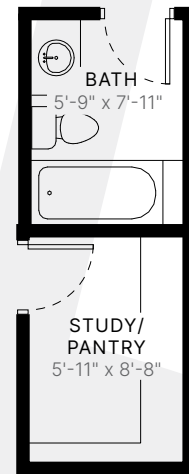
MAIN FLOOR

Gourmet Kitchen with Dining Nook Option



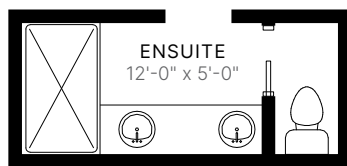
MAIN FLOOR

Gourmet Kitchen with Wine Bar Option



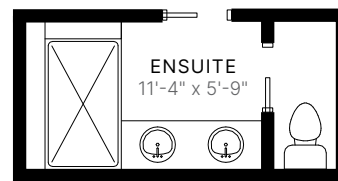
MAIN FLOOR

Full Bath Option



UPPER LEVEL

Water Closet Option (2 Bedroom)



UPPER LEVEL

Water Close Option (3 Bedroom)



The builder reserves the right to modify or change plans, specifications, features and prices without notice. Materials may be substituted with equivalent or better at the builder's sole discretion. All dimensions and sizes are approximate and are based on architectural measurements. As reverse, mirrored and/or flipped plans occur throughout the building, please see architectural plans if material to your decision to purchase. Renderings, furnishings and equipment shown are an artist's conception and are intended as a general reference only. Please see disclosure statement for specific offering details. E. & O.E.