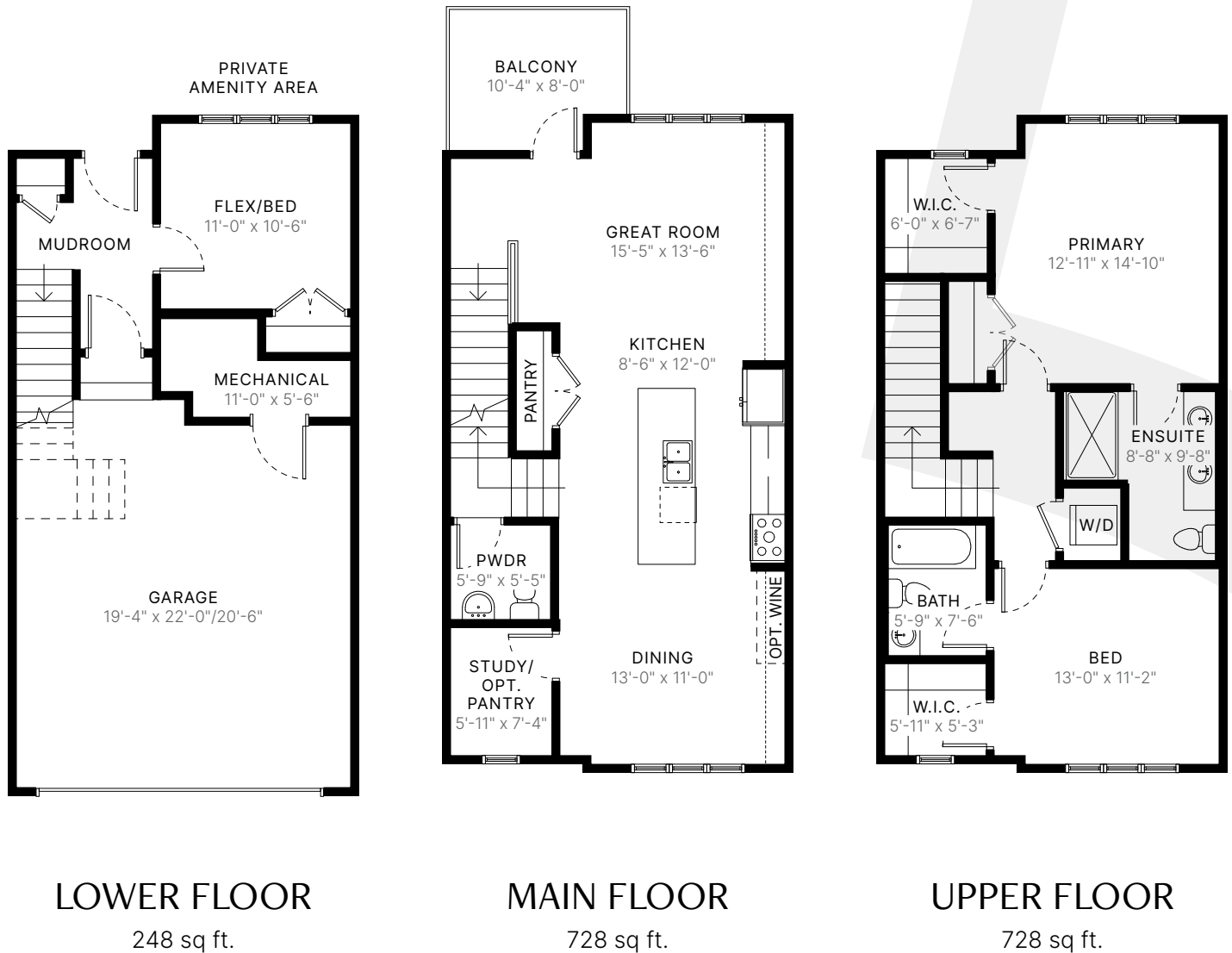


ALDEN

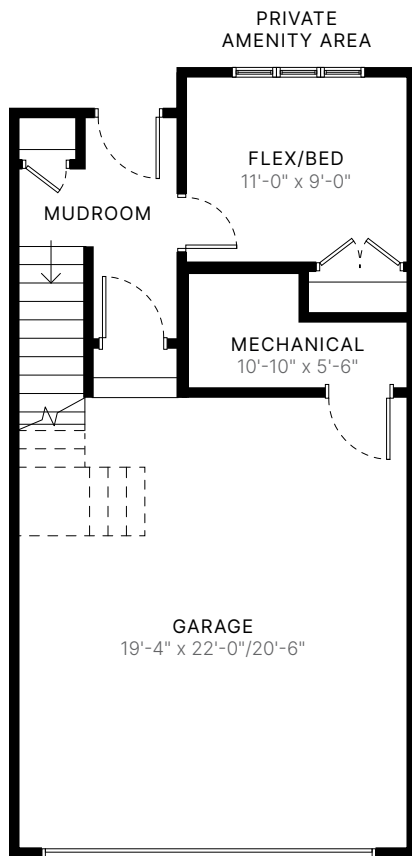
20' // 1,644 sq ft. // 3 bed // 2.5 bath



ALDEN

20' // 1,644 sq ft. // 3 bed // 2.5 bath

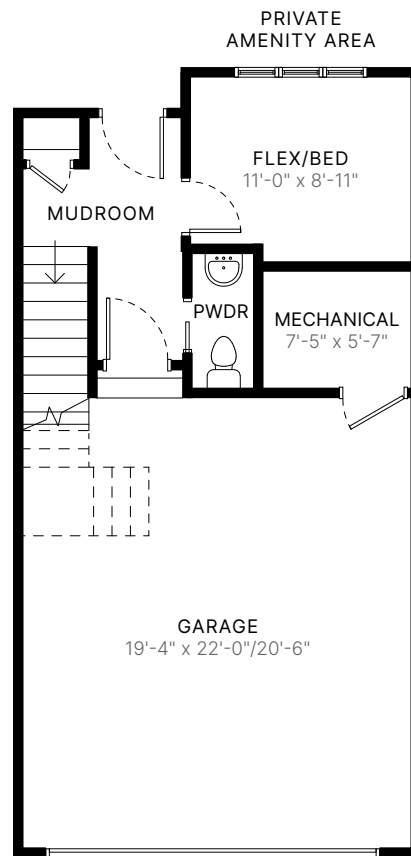
PRE-PLANNED OPTION



LOWER LEVEL

233 sq ft.

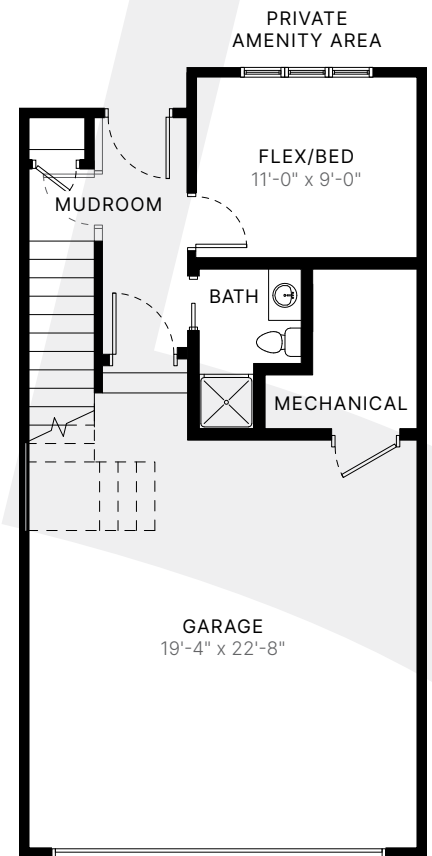
Deep Garage Option



LOWER LEVEL

248 sq ft.

Half Bath Option



LOWER LEVEL

280 sq ft.

3-Piece Bath Option

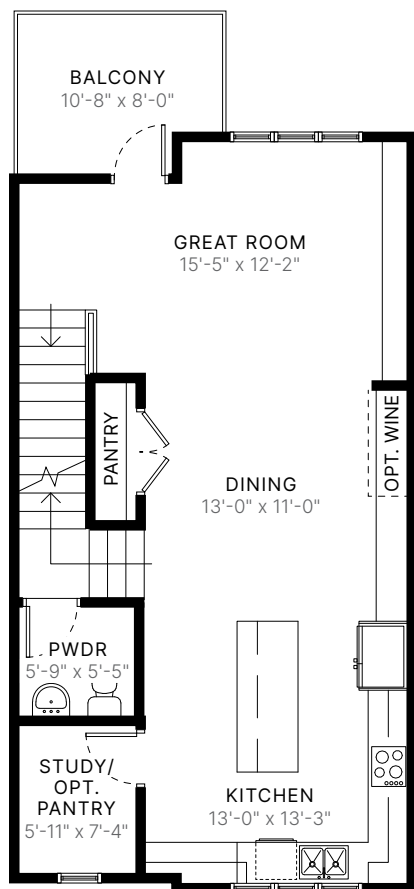
FIFTH
HOMES

The builder reserves the right to modify or change plans, specifications, features and prices without notice. Materials may be substituted with equivalent or better at the builder's sole discretion. All dimensions and sizes are approximate and are based on architectural measurements. As reverse, mirrored and/or flipped plans occur throughout the building, please see architectural plans if material to your decision to purchase. Renderings, furnishings and equipment shown are an artist's conception and are intended as a general reference only. Please see disclosure statement for specific offering details. E. & O.E.

ALDEN

20' // 1,644 sq ft. // 3 bed // 2.5 bath

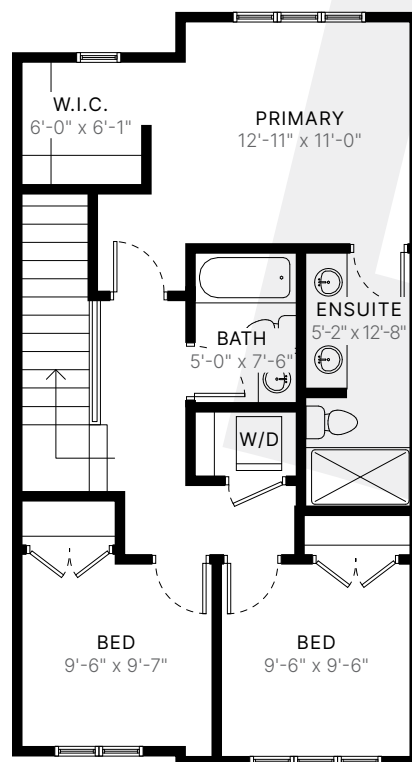
PRE-PLANNED OPTION



MAIN LEVEL

728 sq ft.

Rear Kitchen Option



UPPER LEVEL

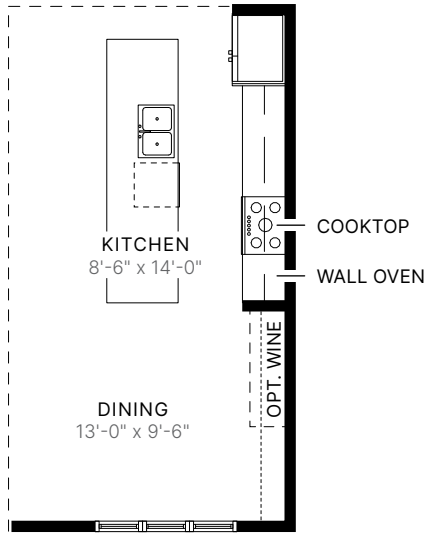
728 sq ft.

3 Bedroom Option

ALDEN

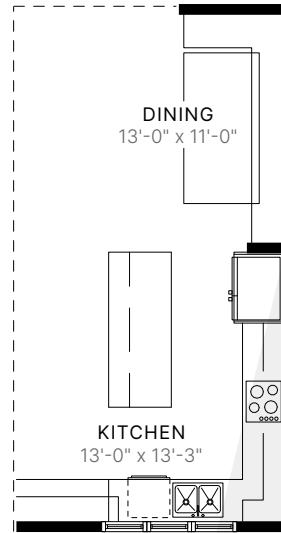
20' // 1,644 sq ft. // 3 bed // 2.5 bath

PRE-PLANNED OPTION



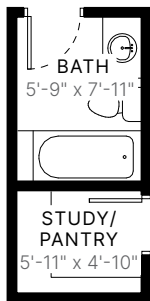
MAIN FLOOR

Gourmet Kitchen Option



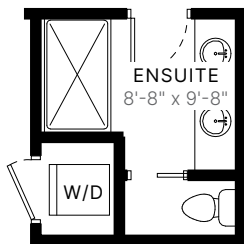
MAIN FLOOR

Dining Bench Option



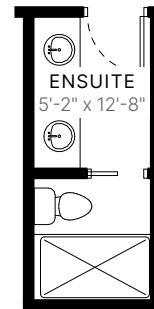
MAIN FLOOR

Full Bath Option



UPPER LEVEL

Water Closet Option



UPPER LEVEL

Wet Room Option*

*Available with 3 bedroom option



The builder reserves the right to modify or change plans, specifications, features and prices without notice. Materials may be substituted with equivalent or better at the builder's sole discretion. All dimensions and sizes are approximate and are based on architectural measurements. As reverse, mirrored and/or flipped plans occur throughout the building, please see architectural plans if material to your decision to purchase. Renderings, furnishings and equipment shown are an artist's conception and are intended as a general reference only. Please see disclosure statement for specific offering details. E. & O.E.