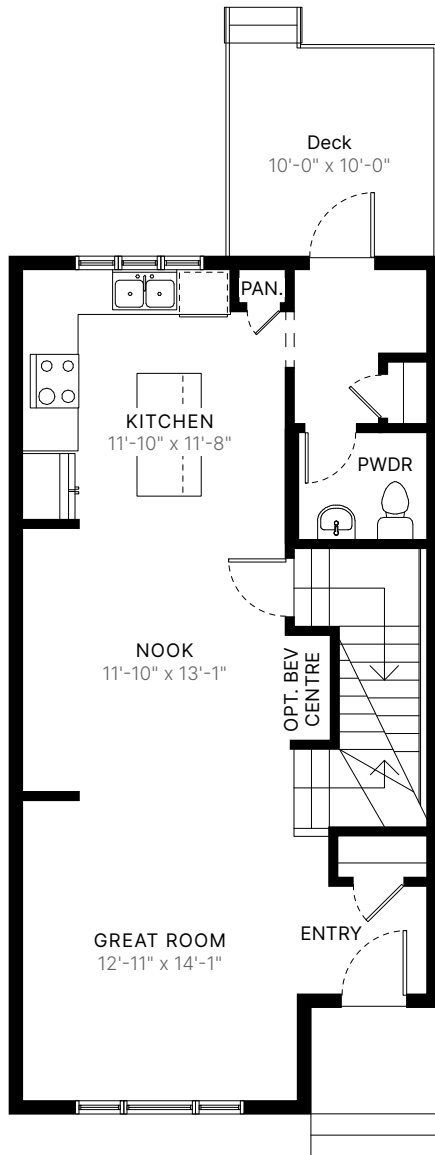


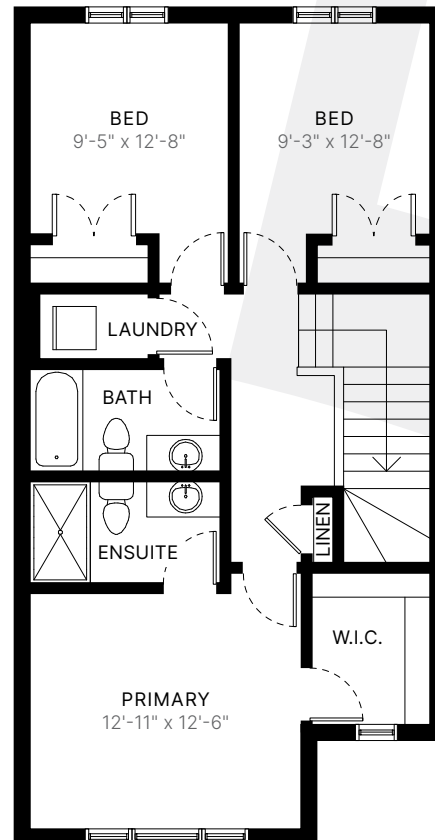
NEWPORT

20' // 1,540 sq ft. // 3 bed // 2.5 bath



MAIN LEVEL

787 sq ft.



UPPER LEVEL

770 sq ft.



The builder reserves the right to modify or change plans, specifications, features and prices without notice. Materials may be substituted with equivalent or better at the builder's sole discretion. All dimensions and sizes are approximate and are based on architectural measurements. As reverse, mirrored and/or flipped plans occur throughout the building, please see architectural plans if material to your decision to purchase. Renderings, furnishings and equipment shown are an artist's conception and are intended as a general reference only. Please see disclosure statement for specific offering details. E. & O.E.

NEWPORT

20' // 1,540 sq ft. // 3 bed // 2.5 bath

PRE-PLANNED OPTION



BASEMENT LEVEL

558 sq ft.

Optional Basement Development

MAIN LEVEL

787 sq ft.

Mid Kitchen Option

UPPER LEVEL

736 sq ft.

Double Primary Bedroom Option



The builder reserves the right to modify or change plans, specifications, features and prices without notice. Materials may be substituted with equivalent or better at the builder's sole discretion. All dimensions and sizes are approximate and are based on architectural measurements. As reverse, mirrored and/or flipped plans occur throughout the building, please see architectural plans if material to your decision to purchase. Renderings, furnishings and equipment shown are an artist's conception and are intended as a general reference only. Please see disclosure statement for specific offering details. E. & O.E.