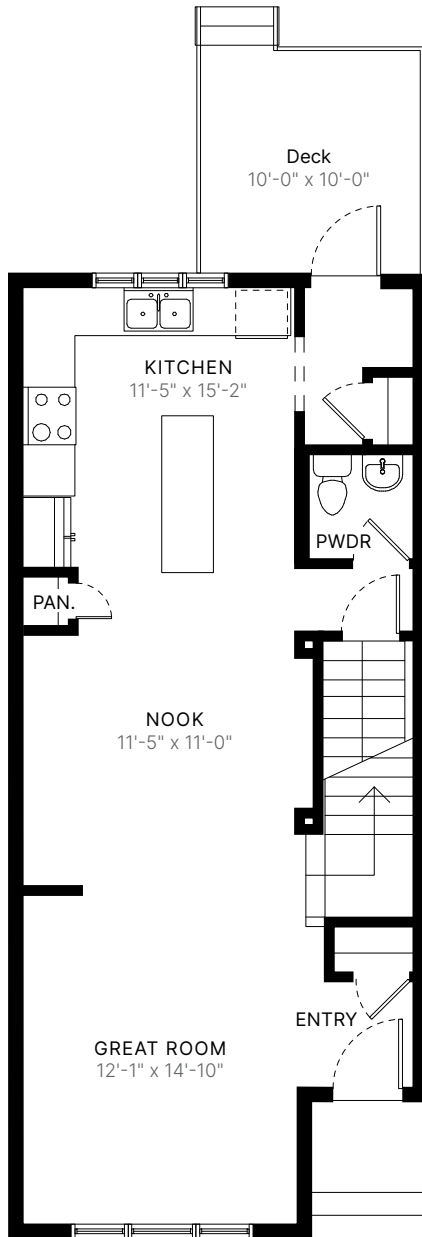
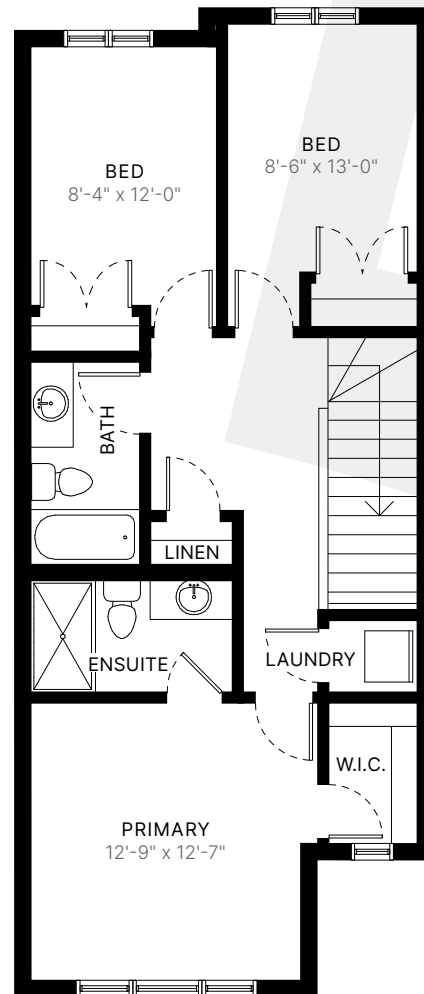


LIDO

18' // 1,462 sq ft. // 3 bed // 2.5 bath



MAIN LEVEL
726 sq ft.

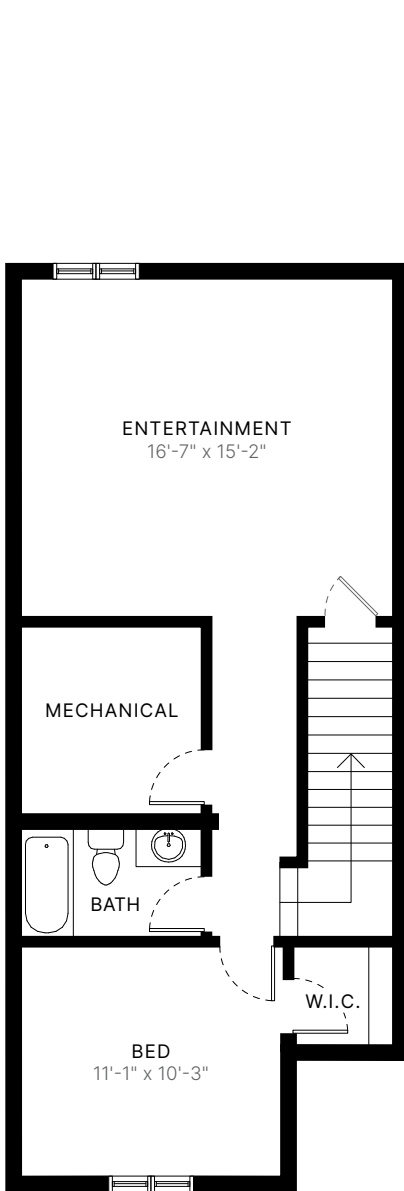


UPPER LEVEL
736 sq ft.

LIDO

18' // 1,462 sq ft. // 3 bed // 2.5 bath

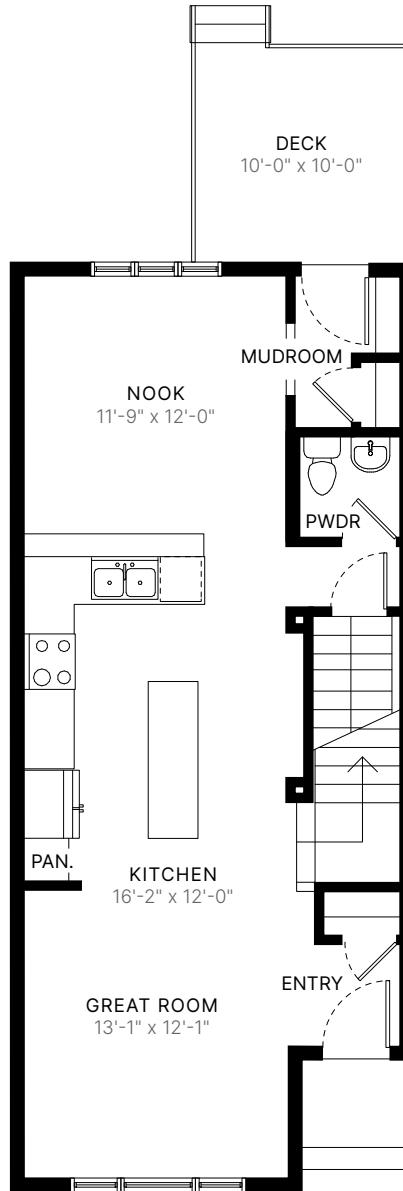
PRE-PLANNED OPTION



BASEMENT LEVEL

551 sq ft.

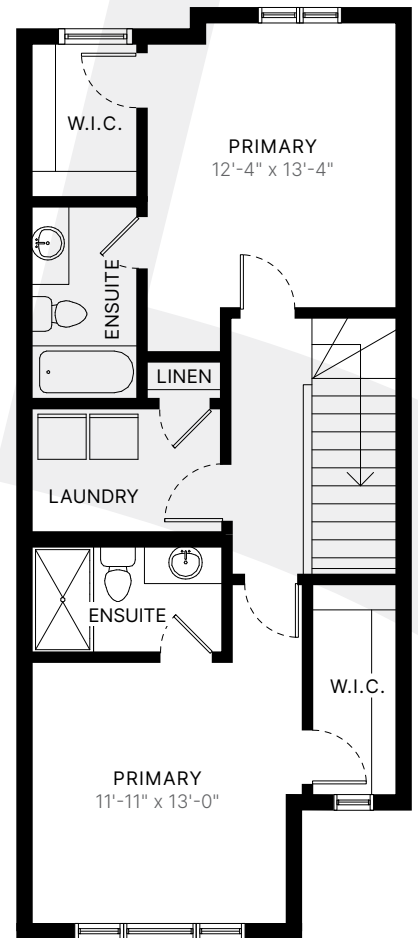
Optional Basement Development



MAIN LEVEL

726 sq ft.

Mid Kitchen Option



UPPER LEVEL

736 sq ft.

Double Primary Bedroom Option



The builder reserves the right to modify or change plans, specifications, features and prices without notice. Materials may be substituted with equivalent or better at the builder's sole discretion. All dimensions and sizes are approximate and are based on architectural measurements. As reverse, mirrored and/or flipped plans occur throughout the building, please see architectural plans if material to your decision to purchase. Renderings, furnishings and equipment shown are an artist's conception and are intended as a general reference only. Please see disclosure statement for specific offering details. E. & O.E.